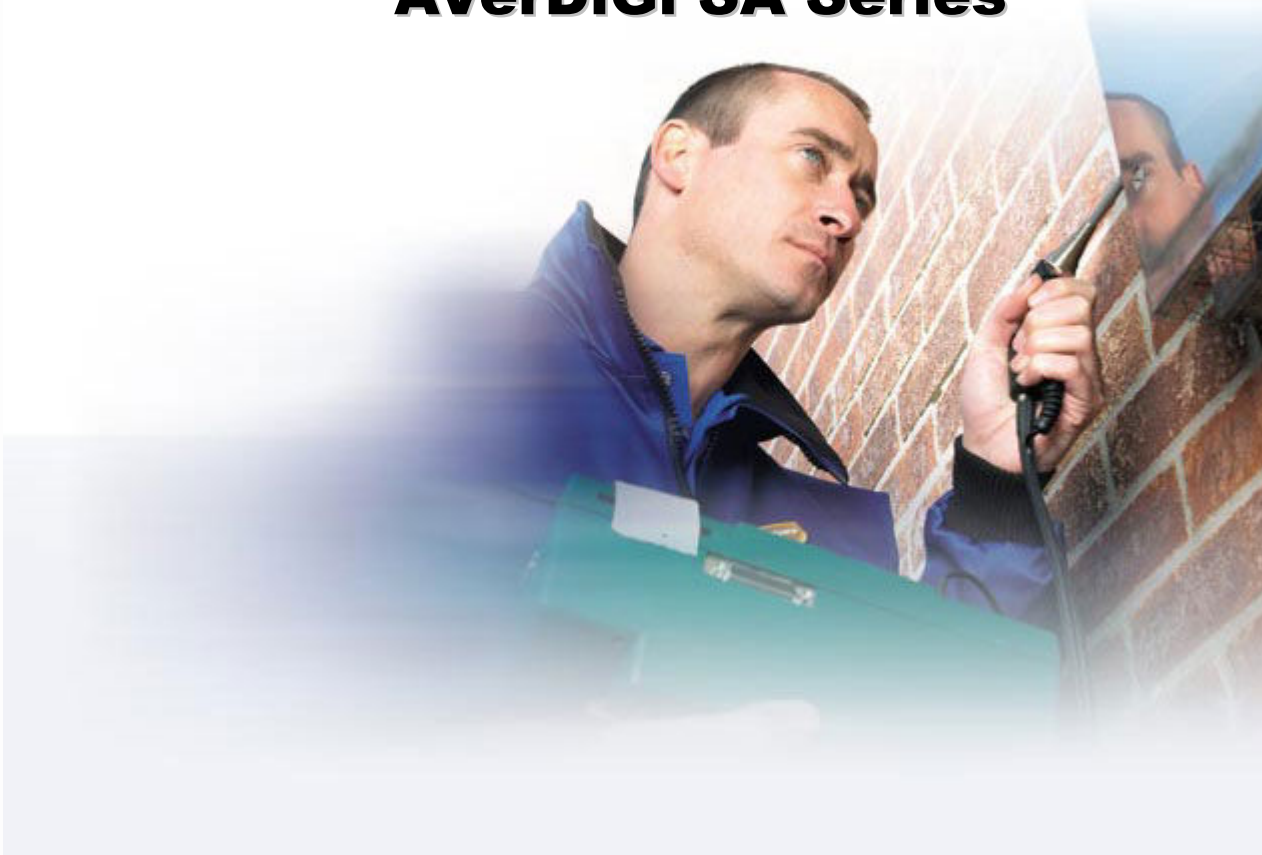


Installers Handbook

AVerDiGi SA Series



Document Version: 1.0



Email: avtnvd@aver.com

URL: <http://www.aver.com/>

Feedback: avtnvd@aver.com



Configuring the Regional Options

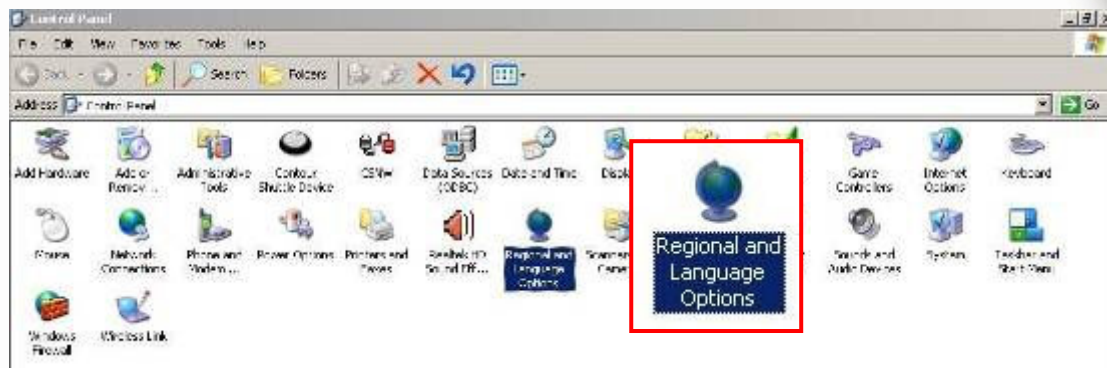


IMPORTANT! The procedures outlined below must be followed step by step to ensure that the system will operate optimally.

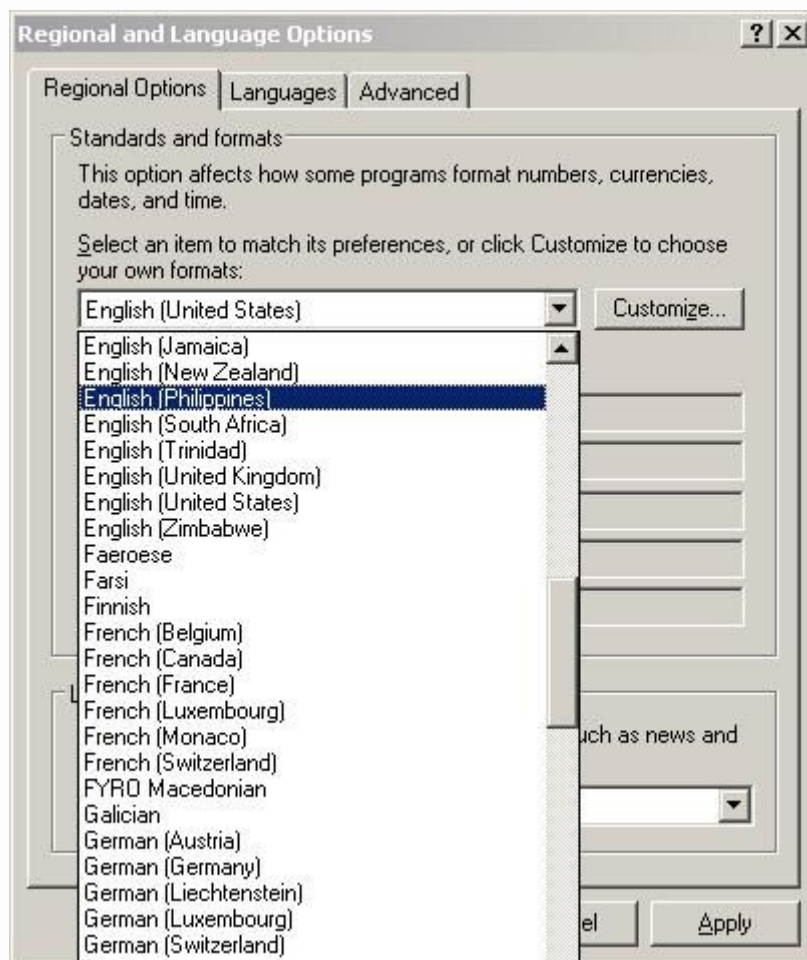
1. To get to the Embedded XP RTOS Control panel, Press Control-L and type in the default password of “8888”



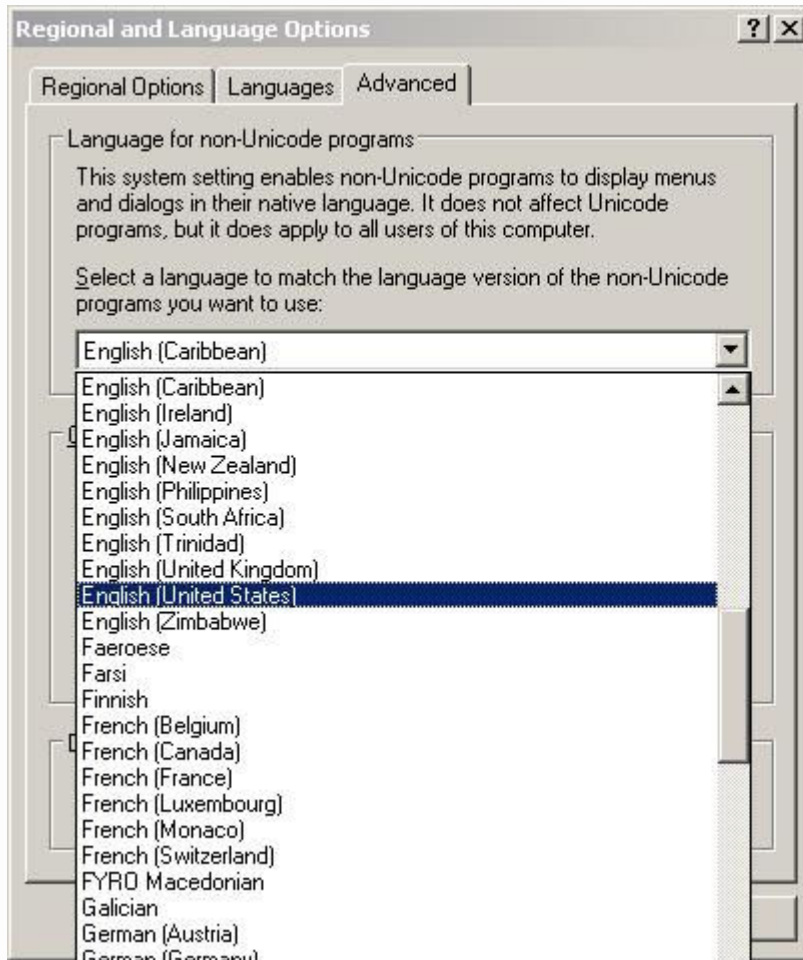
2. Select Regional Language and Options from the list of options.



3. Under the Regional and language options, select the correct Region where the DVR is located.



4. Under the advanced setting, select the correct Language setting where the DVR is located. Click “Apply” when you are done. Don’t reboot the system yet as we have other settings to go through.



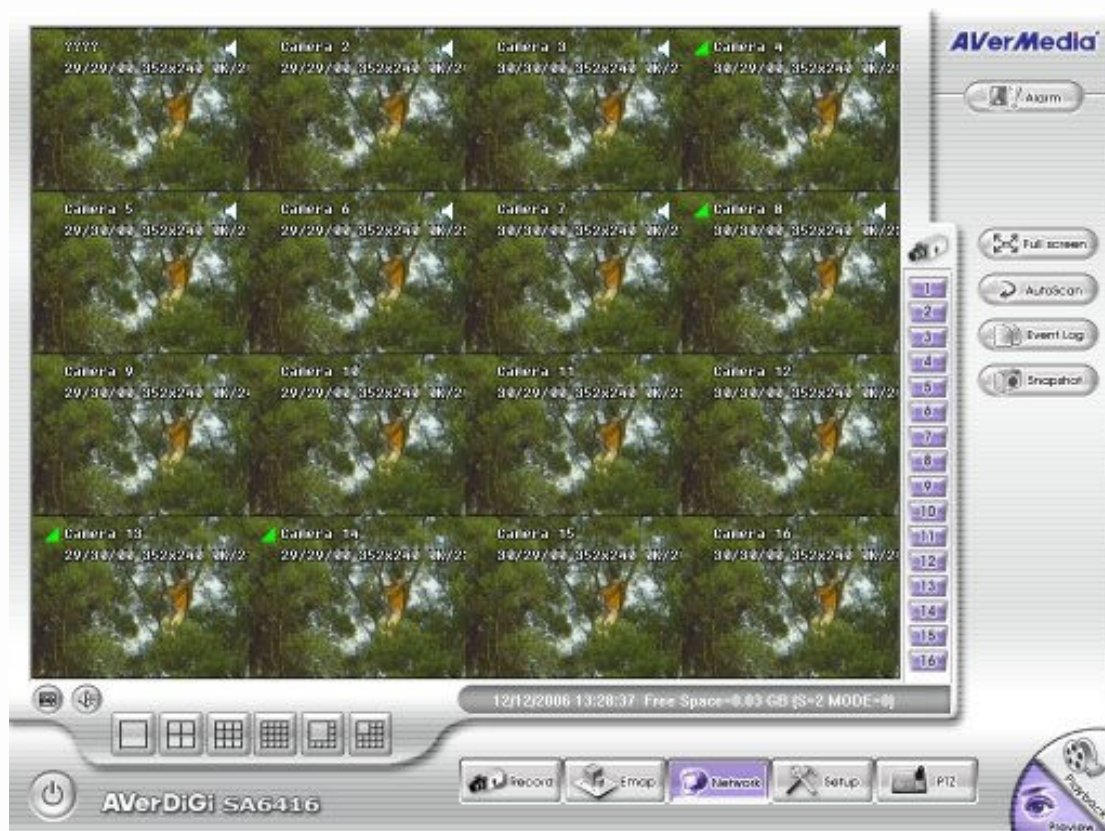
Configuring the Network Settings



Please make sure that you place the SA Series behind a commercial firewall for better security protection

- If do not have a fixed IP, kindly make sure you have a company DHCP server setup for dynamic IP address.
- If you have a Fixed IP, please find out the corresponding GATEWAY, DNS IP address from your network administrator
- Make sure your firewall is also configured to block all unnecessary ports from the system.

1. If you already have the control panel opened, please skip this step. Otherwise, press Control-L followed by entering the default password “8888”.





2. Under the Control Panel screen, select “Network Connections”.



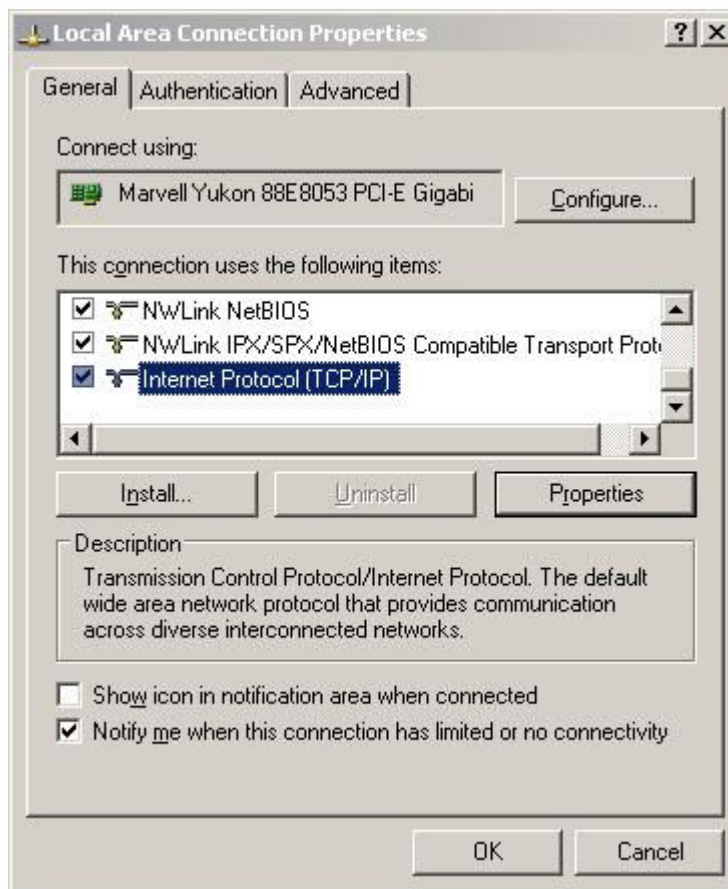
3. Right click your mouse on “Local Area Connection”.



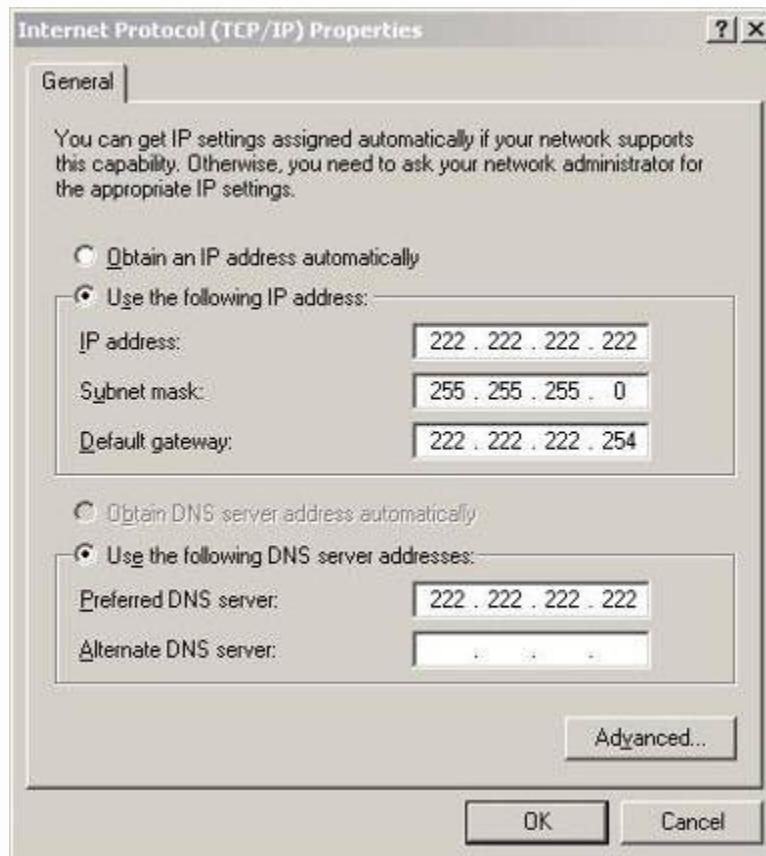
4. Select “Properties”



5. Now select ‘Internet Protocol (TCP/IP) and click on “Properties”



6. On this page, you can enter your fix IP here.



7. Click "OK" when you are done. Don't reboot the system yet as we have other settings to go through.

Installing New Hard Drives into the SA Series.



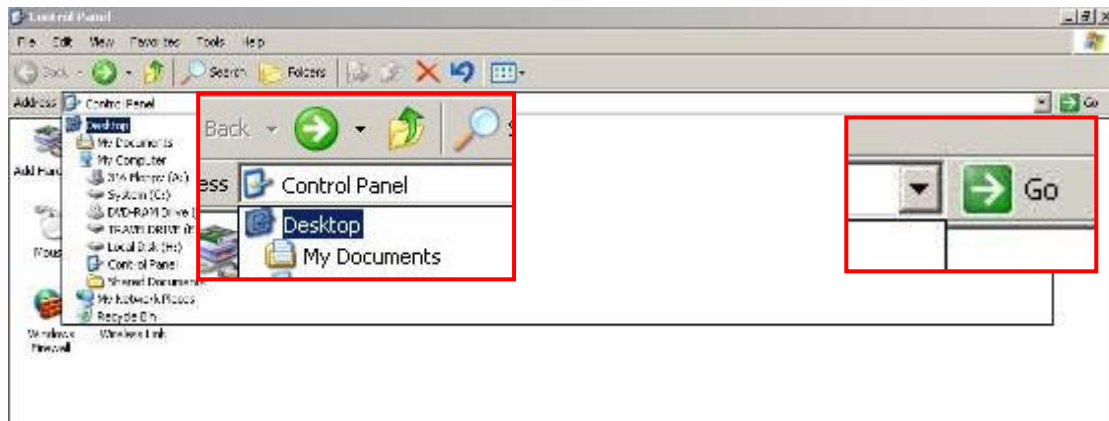
Please note that the SA Series can support up to 4 Serial ATA (SATA) Hard drives (One internally as well as 3 removable)

1. If you already have the control panel opened, please skip this step. Otherwise, press Control-L followed by entering the default password “8888”.





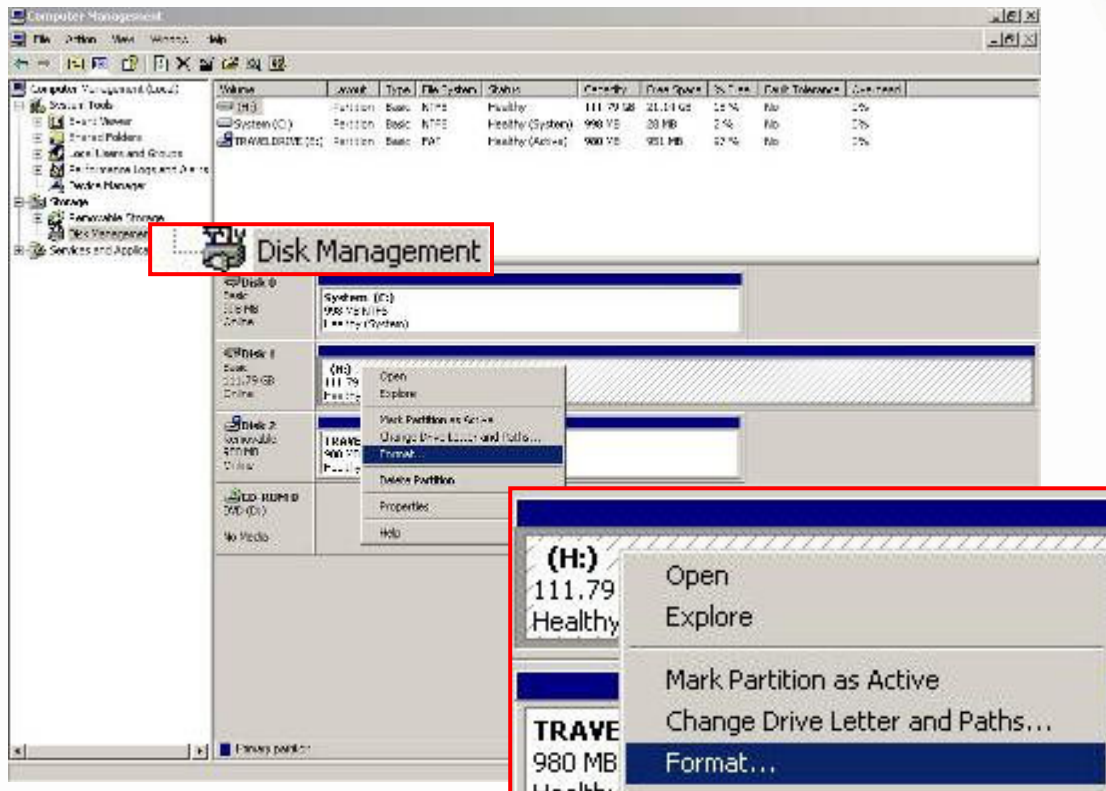
2. Select “Desktop” from the dropped down list as indicated on the screen below.



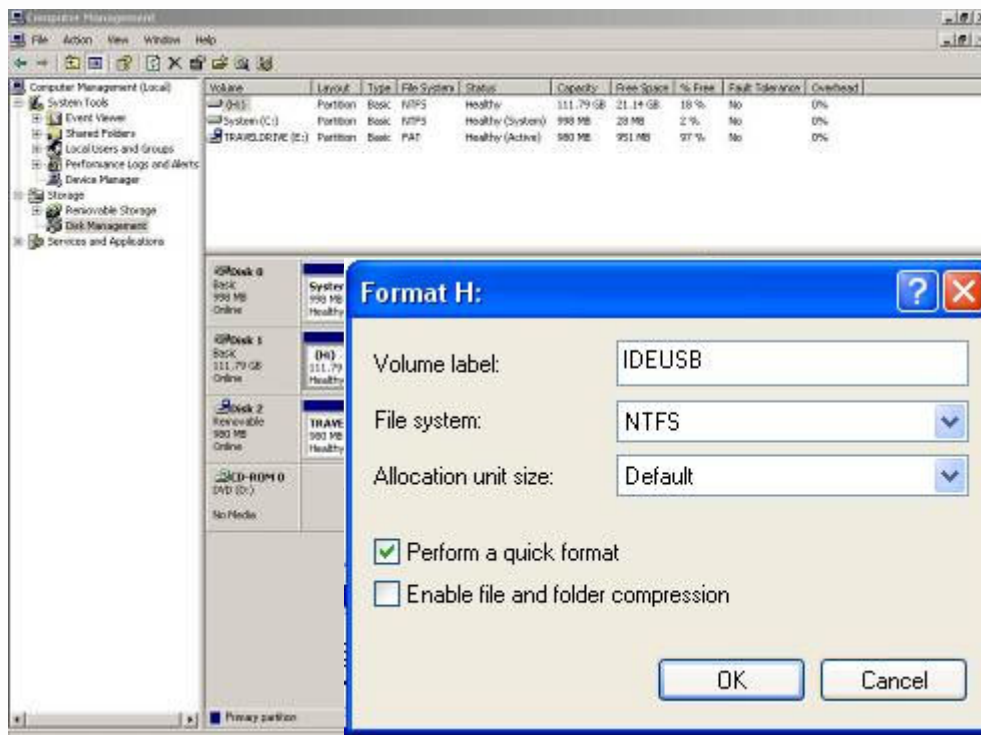
3. Now right click on “My Computer” and select “Manage”.



- After the “Computer Management” screen pops up, please double click “Disk Management” and choose your new hard drive. Right click on it and choose Format.



- After the format screen pops up, select “NTFS” file system and check “Perform a quick format then press OK.

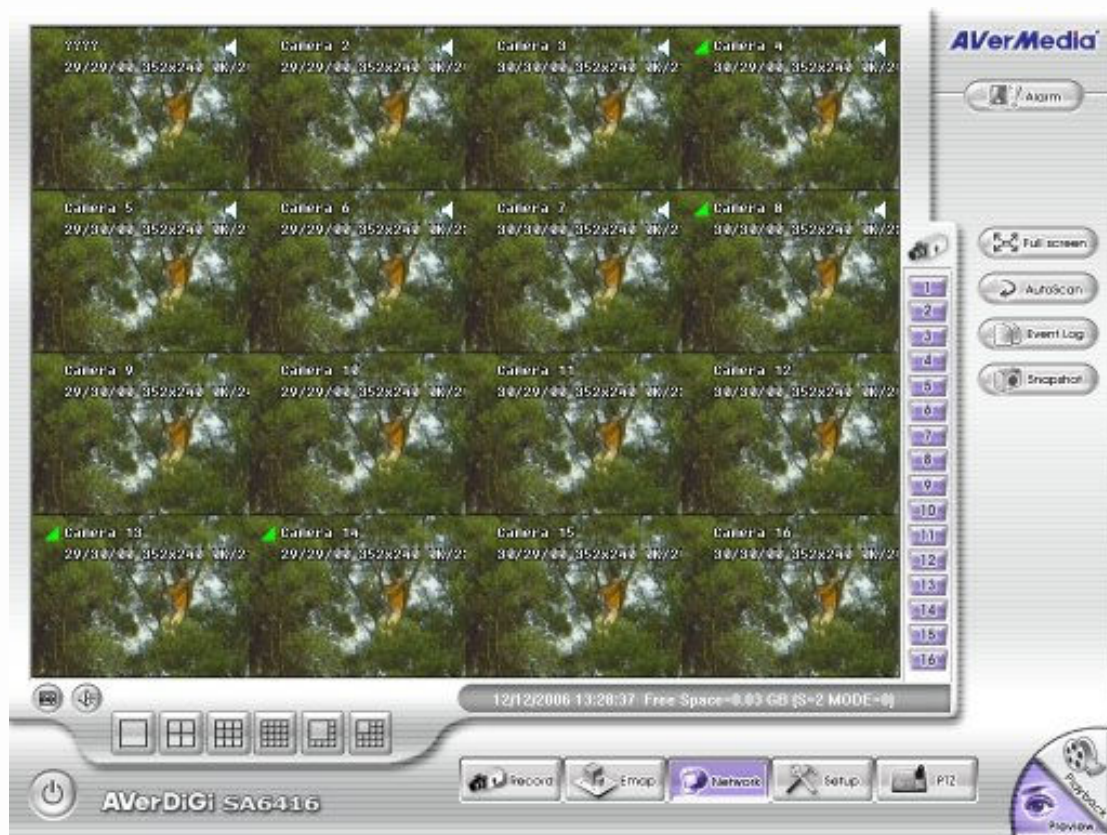


Setting the Date and Time



It is important to set the correct date and time on the system so that you can easily search for past recordings.

1. If you already have the control panel opened, please skip this step. Otherwise, press Control-L followed by entering the default password “8888”.



Configuring the XP Embedded RTOS Virtual Memory (This is a Critical Step!)



NOTE: It is important that you set the virtual memory on the XP Embedded system to utilize your newly installed SATA Hard Drive for system stability.

1. If you already have the control panel opened, please skip this step. Otherwise, press Control-L followed by entering the default password “8888”.



- Double click on “System”
- Choose “Advanced”
- Click “Settings”
- Choose “Advanced”
- Click “Change”
- Select “C” Drive and set both Initial Size and Maximum Size to “0”
- Now select “D” (Or any new drive that you have added) and set Initial Size to “4” and Maximum Size to “1024”
- Click “OK”.
- Reboot the system after you are done.

